

**First Judicial District of Pennsylvania
Court of Common Pleas of Philadelphia
Trial Division - Civil
Judicial Assignment Chart
Effective: Monday, January 9, 2017**

**Hon. Sheila Woods-Skipper
President Judge
Chair, AGB**

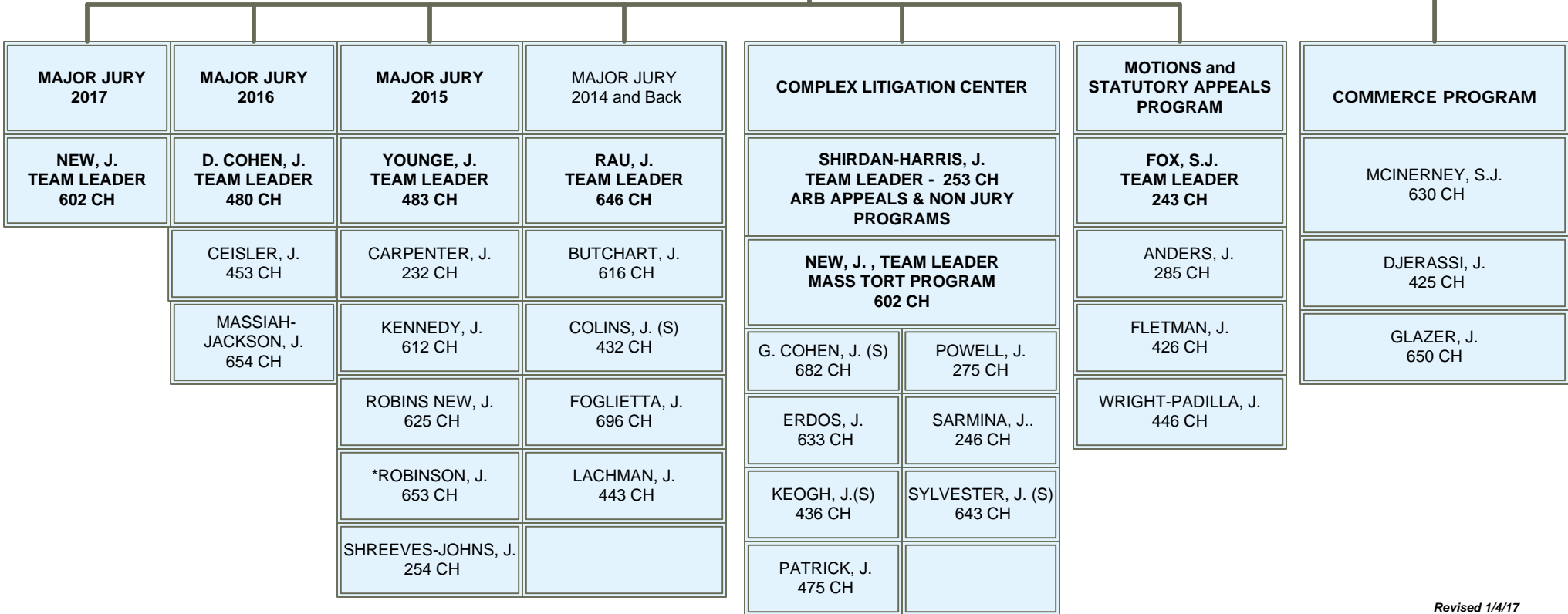
**Charles A. Mapp, Sr.
Chief Deputy Court Administrator**

**Joseph H. Evers
District Court Administrator**

**Hon. Jacqueline F. Allen
Administrative Judge**

**Hon. Idee C. Fox
Supervising Judge**

**Hon. Patricia A. McInerney
Supervising Judge**



***Judge Robinson is temporarily
assigned to CR 675**